

## Handling System for Rack Type Dishwasher Table Unloading/ Loading, 600mm

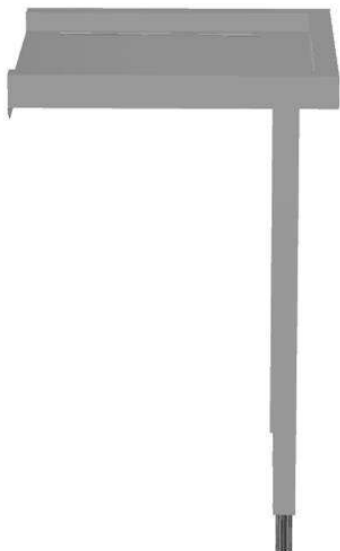
ITEM # \_\_\_\_\_

MODEL # \_\_\_\_\_

NAME # \_\_\_\_\_

SIS # \_\_\_\_\_

AIA # \_\_\_\_\_

**865319 (BHRLU6)**Dishwasher table, loading/  
unloading, 600 mm

### Short Form Specification

**Item No.** \_\_\_\_\_

For rack type dishwashers. Constructed in 304 AISI stainless steel. N.2 square 40x40mm tubular legs on height-adjustable feet. Basket direction: from right to left and from left to right.

### Main Features

- Supplied knocked-down and easy to assemble.
- Designed to transport 500x500 mm dishwashing baskets.

### Construction

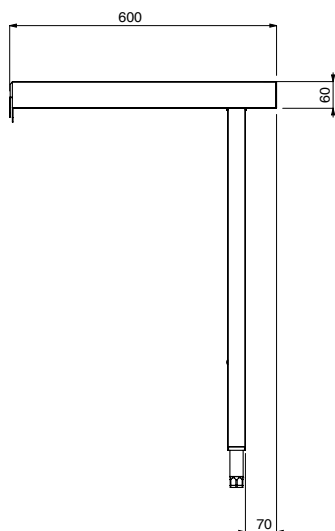
- Deep anti-drip profiles completely folded with lower edge for safe and easy cleaning.
- 40x40 mm square tubular legs in AISI 304 stainless steel.
- All surfaces smooth with polished finish.
- Stainless steel feet 50 mm adjustable in height to ensure that tables drain back into the dishwasher.
- Optionally equipped with plain undershelves and end limit switch.
- 304 AISI stainless steel construction throughout.
- To be secured to the dishwasher and fitted with one pair of legs at the other end.

### Optional Accessories

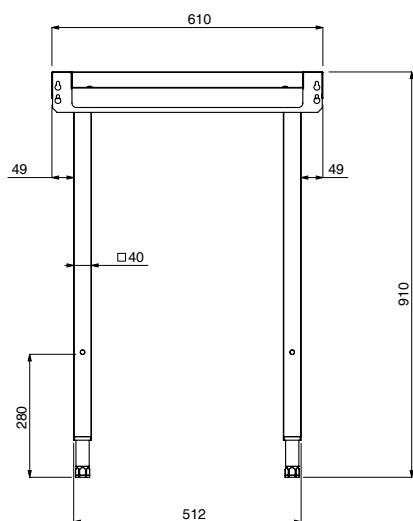
- Undershef for dishwasher table, 600mm PNC 865350 ☐
- Basket guide for dishwasher table with bowl 600 mm for hood type and Rack Type Dishwasher PNC 865370 ☐
- End limit switch for tables PNC 865385 ☐
- Floor fastening kit for 2 square legs PNC 865386 ☐
- Removable bridge table, 800 mm PNC 865418 ☐
- Removable bridge table with hole, 800 mm PNC 865419 ☐
- Small splashback (to be aligned with the back of the Rack Type Dishwasher), 600 mm PNC 865422 ☐

APPROVAL: \_\_\_\_\_

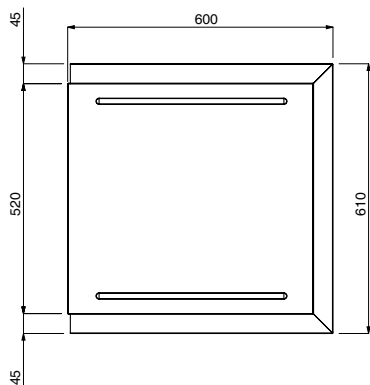
**Front**



**Side**



**Top**



## Key Information:

External dimensions, Width:

865319 (BHRLU6) 600 mm

External dimensions, Depth: 600 mm

External dimensions, Height: 910 mm

Net weight: 6 kg